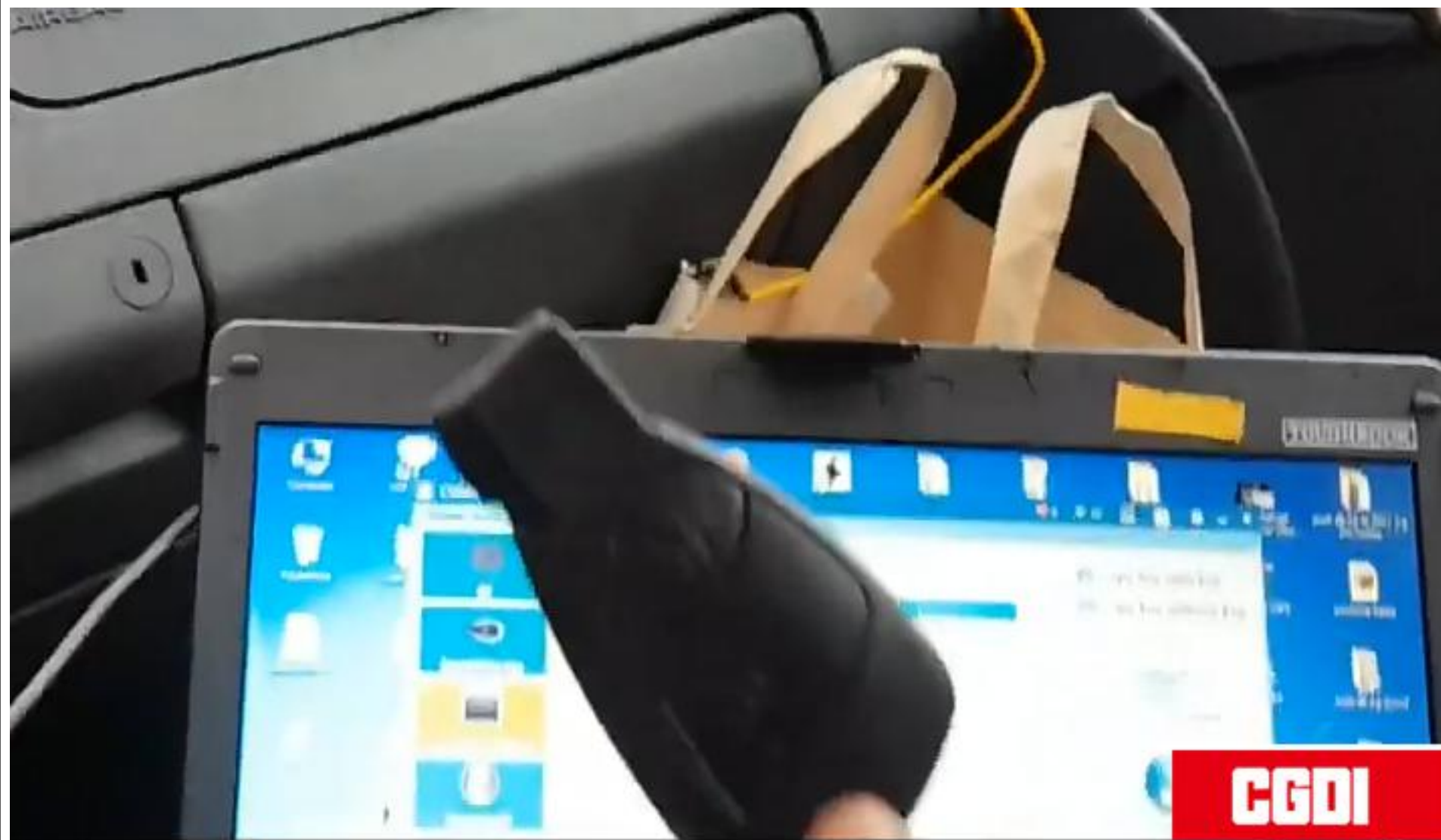




**CGDI MB Adds Old Benz Kline  
W202 W208 W210 Key via OBD**

CGDI MB adds Mercedes Benz old K-line vehicle key programming.  
Here's the guide on adding new keys to w202 w208 w210 kline MB  
38pin car from 1997 to 1998 via OBD.(Original car key)



New key to be programmed



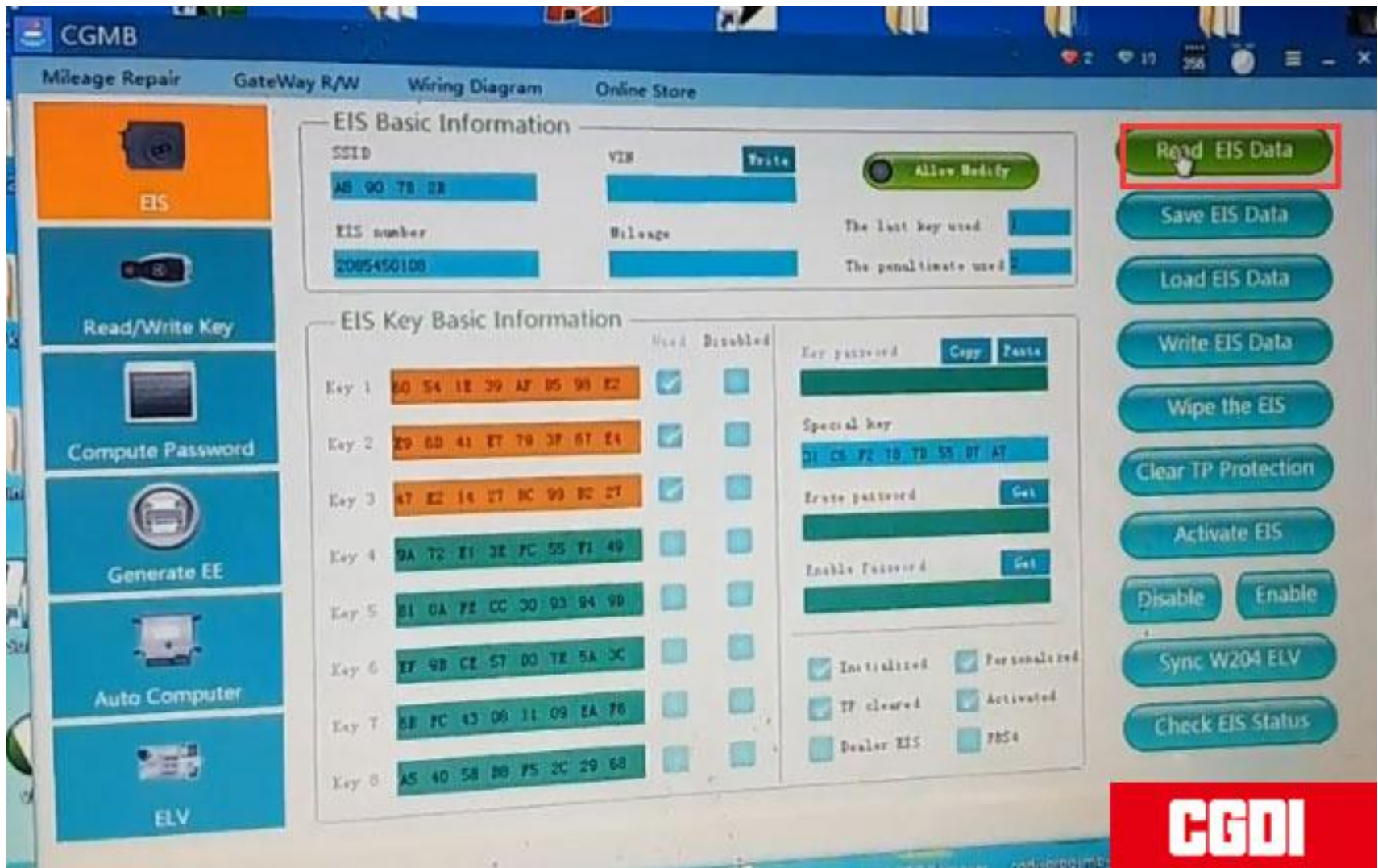
new key to be programmed

**CGDI**

Step 1: Calculate Password

Connect CGDI Prog with laptop and vehicle

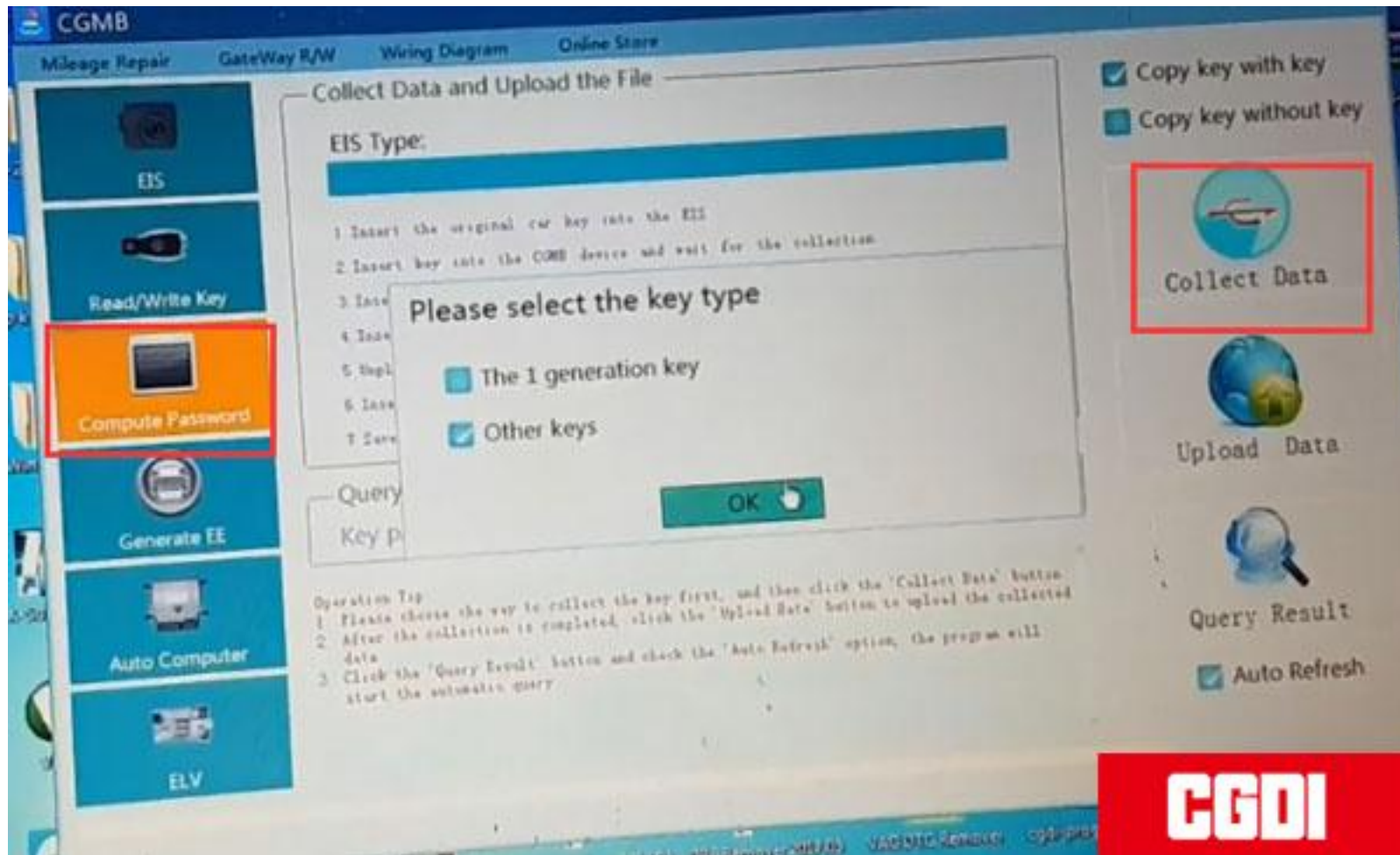
Open CGDI MB software





Go to EIS->Read EIS data

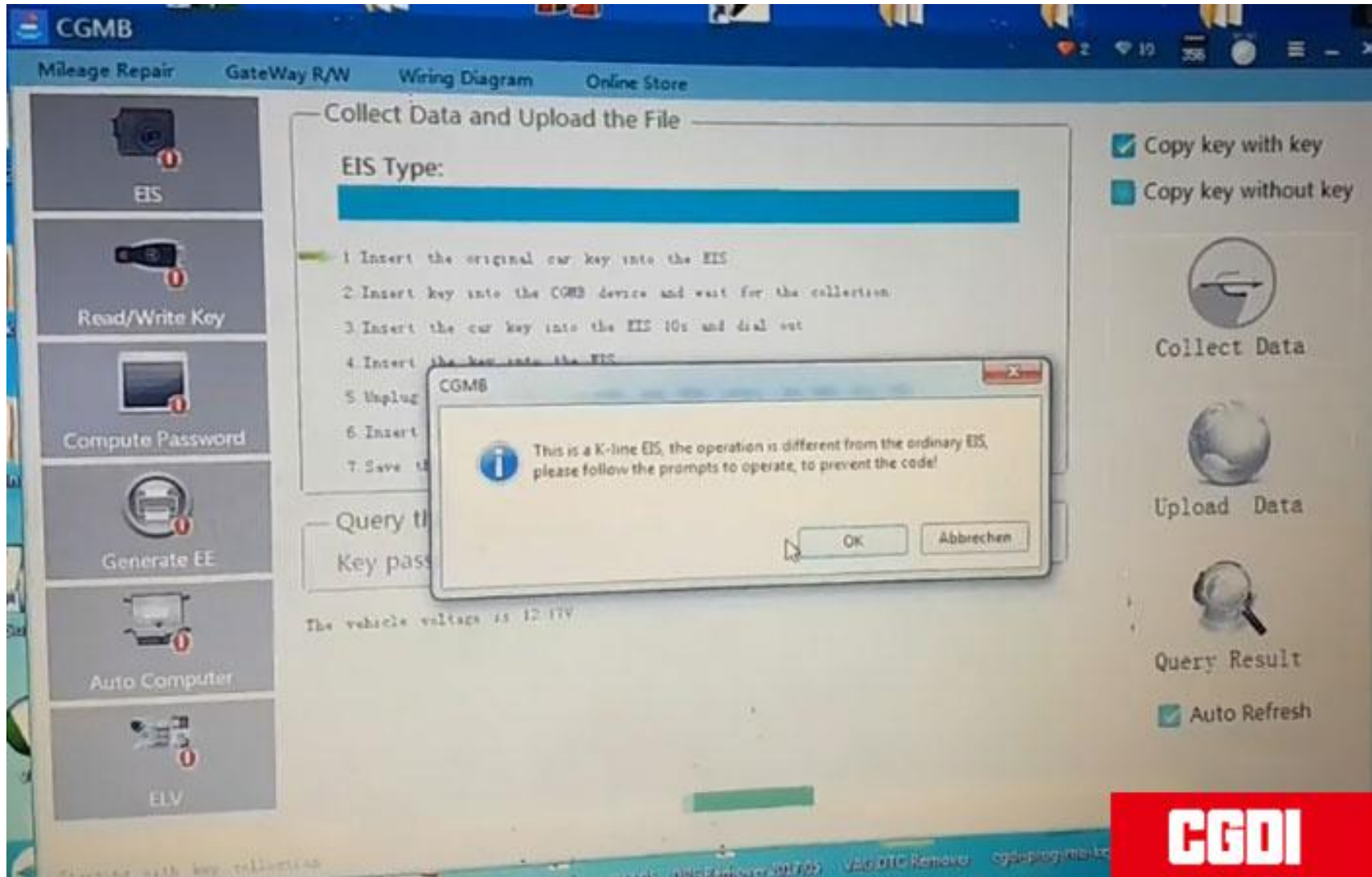
Select Computer Password-> Copy key with key-> Collect data



Follow 7 steps below to collect data

1. Insert original key into EIS and press OK

This is a k-line EIS, the operation is different from the ordinary EIS.

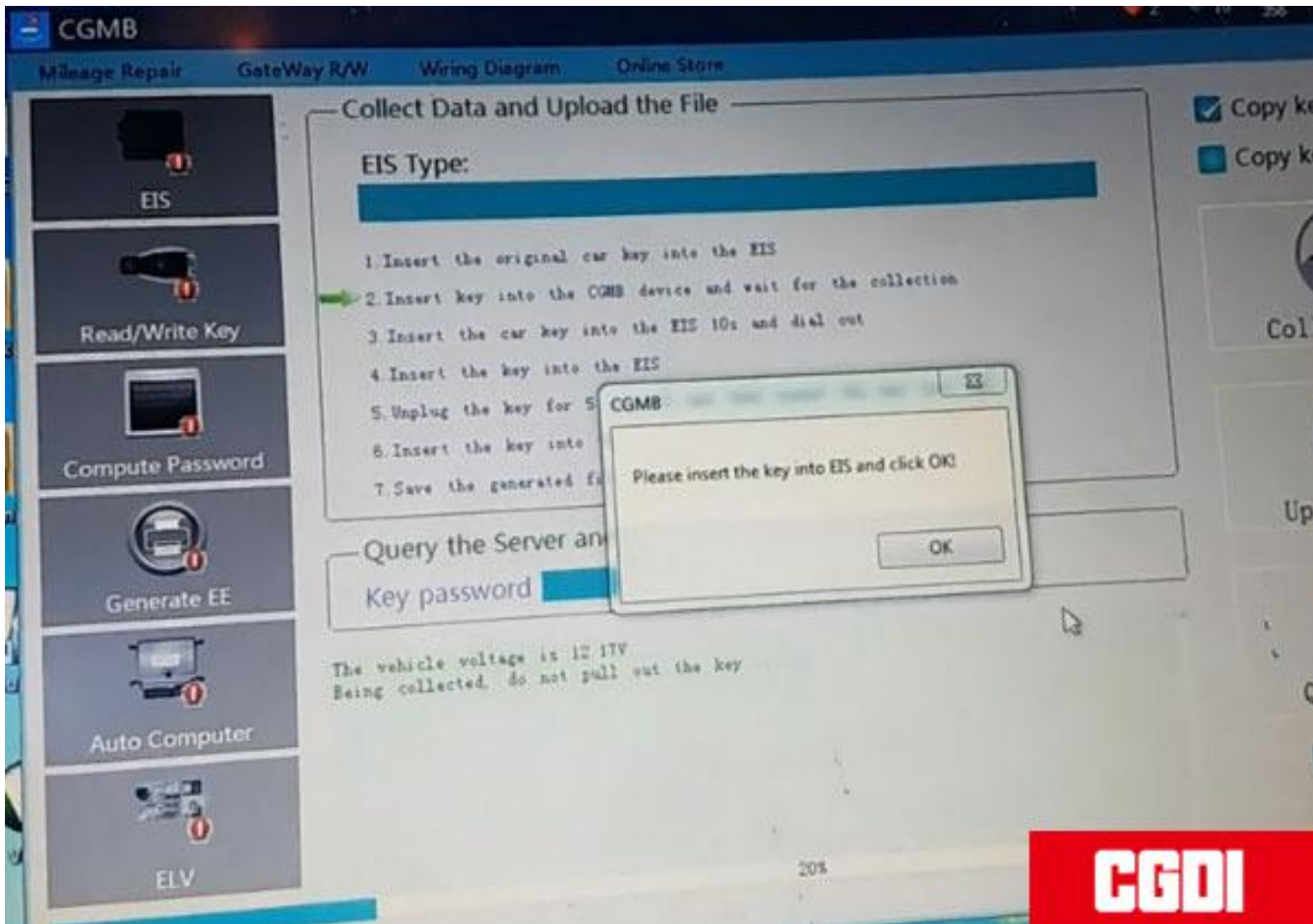


2. Insert key into CGDI MB and wait for collection

3. Insert the car key into EIS 10s and remove

Make sure to twist the key to ON position and turn on instrument. If failed to do this, pull out the key and try again. Press OK to continue.

4. Insert the key into EIS

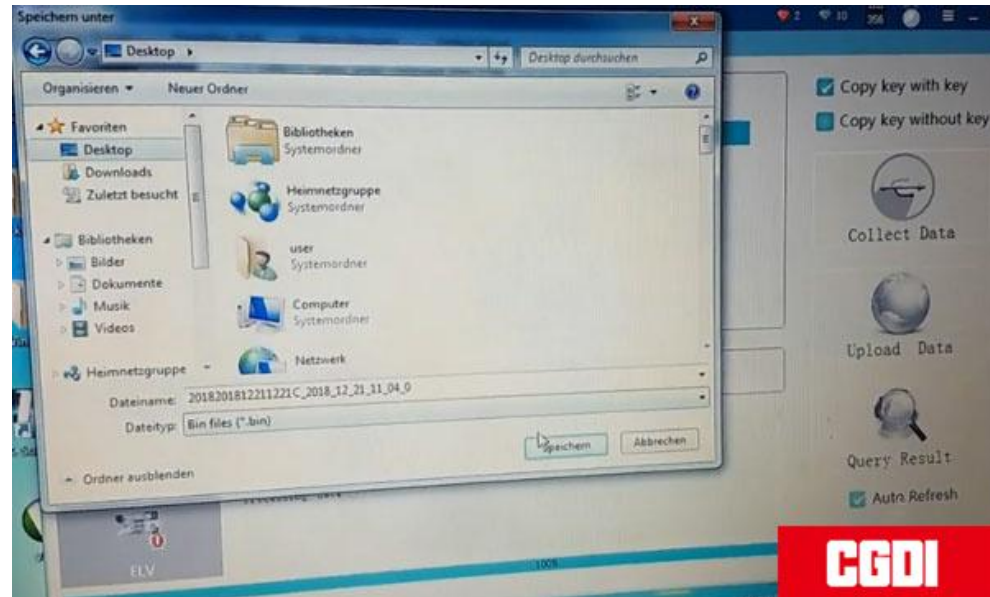




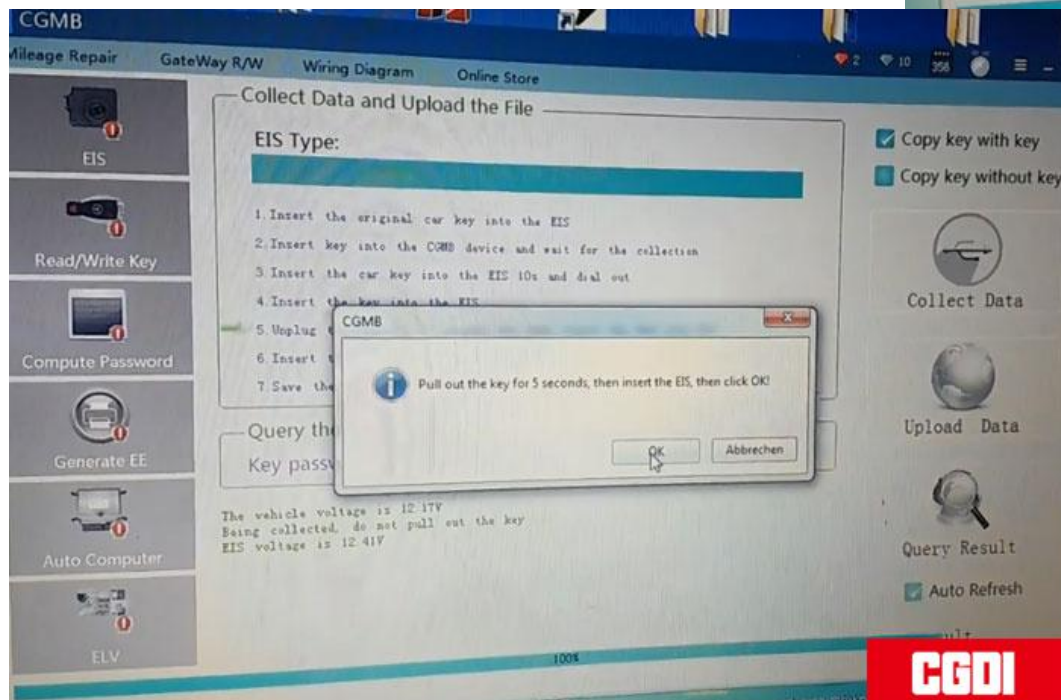
5. Remove the key for 5s and then insert the key into EIS

6. Insert the key into CGDI MB

7. Save the generated files



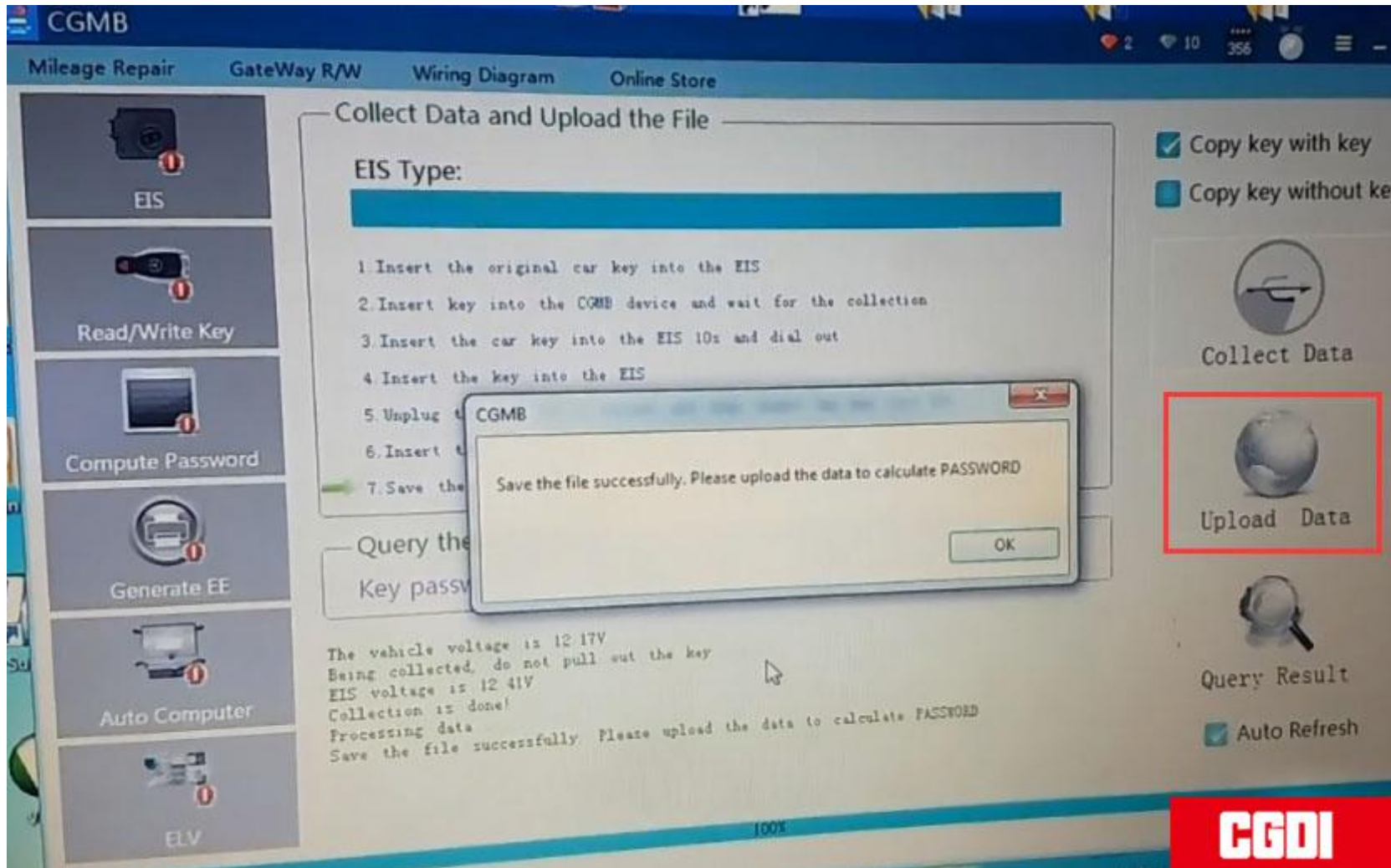
CGDI



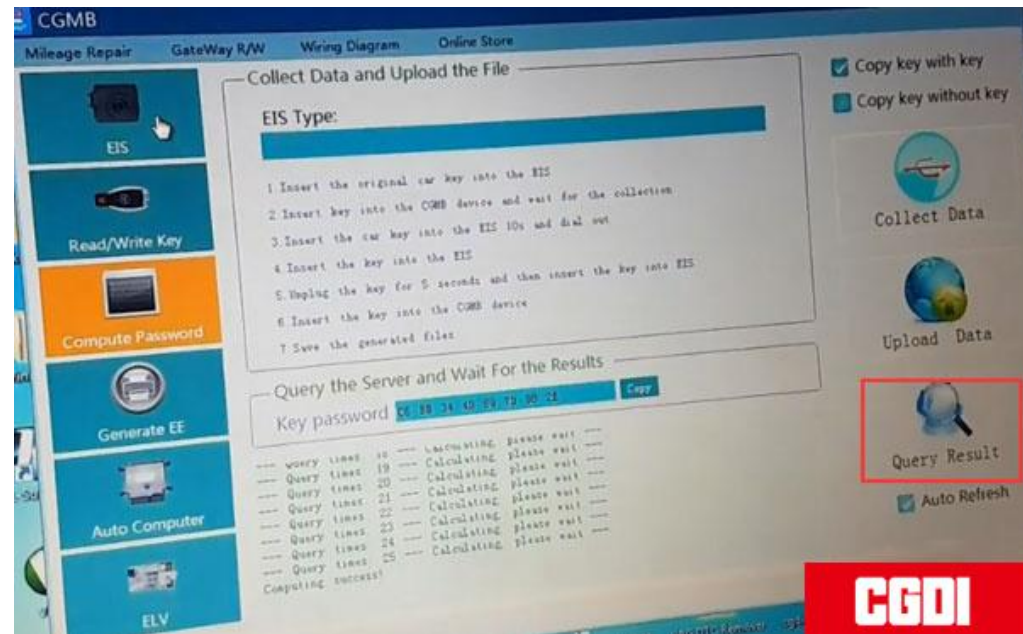
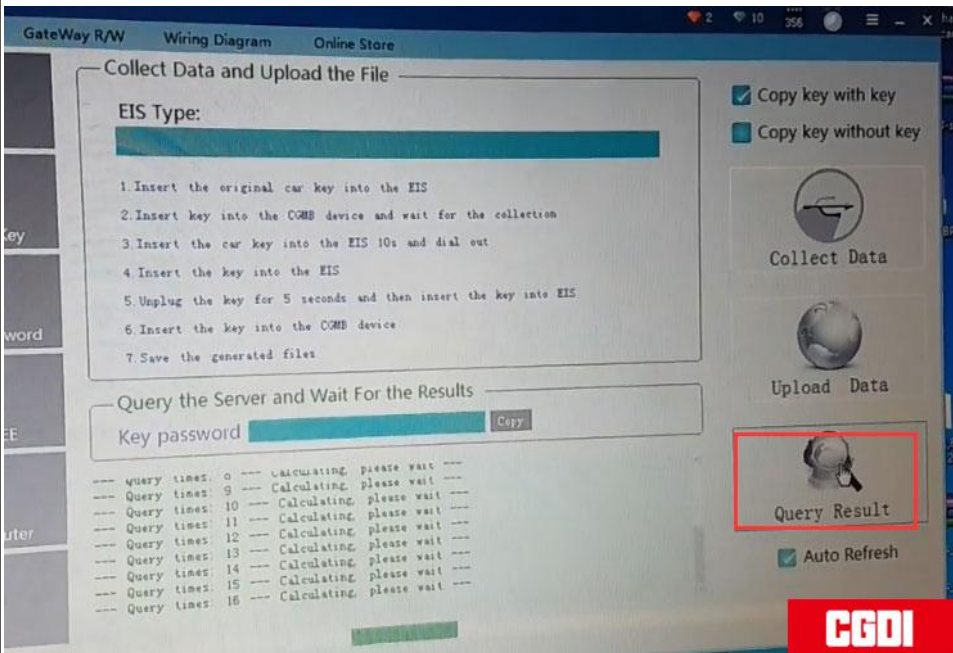
CGDI



8. Save the file successfully. Upload the data to calculate password.



# Upload data successfully. Press Query Results to calculate pass--done



Copy and paste the pass to EIS Key password area and then save it

**CGMB**

Mileage Repair    GateWay R/W    Wiring Diagram    Online Store

### EIS Basic Information

SSID: AD 90 7B 2B    VIN:  **Write**    **Allow Modify**

EIS number: 2085450100    Mileage:     The last key used:

The penultimate used:

### EIS Key Basic Information

Key	Hex Value	Used	Disabled
Key 1	80 54 1E 39 AF B5 90 E2	<input checked="" type="checkbox"/>	<input type="checkbox"/>
Key 2	29 6D 41 E7 79 3F 67 E4	<input checked="" type="checkbox"/>	<input type="checkbox"/>
Key 3	47 E2 14 27 BC 99 B2 27	<input checked="" type="checkbox"/>	<input type="checkbox"/>
Key 4	9A 72 E1 3E FC 55 F1 49	<input type="checkbox"/>	<input type="checkbox"/>
Key 5	B1 0A FE CC 3D 93 94 9D	<input type="checkbox"/>	<input type="checkbox"/>
Key 6	EF 9B CE 57 D0 7E 5A 3C	<input type="checkbox"/>	<input type="checkbox"/>
Key 7	BB 7C 43 06 11 09 EA F6	<input type="checkbox"/>	<input type="checkbox"/>
Key 8	A5 4D 58 D8 F5 2C 29 68	<input type="checkbox"/>	<input type="checkbox"/>

Key password:  **Copy** **Paste**

Special key:

Erase password:  **Get**

Enable Password:  **Get**

Initialized     Personalized  
 TP cleared     Activated  
 Dealer EIS     FBS4

**Save EIS Data**

**CGDI**



# Select Generate EE->V051-> Load EIS file

Message Repair GateWay R/W Wiring Diagram Online Store

**EIS**

**Read/Write Key**

**Compute Password**

**Generate EE**

**Auto Computer**

**ELV**

**Load the EIS File and Confirm the PASSWORD**

SSID  VIN

Key password

**Load EIS File**

**Select the Key File Format and Location to Generate**

1. Select the key file format  
2. Select generate key position  
3. Click the [Generate Key File] button to generate

V041  V051

Key 1  Key 2  Key 3  Key 4

Key 5  Key 6  Key 7  Key 8  Select All

**Generate Key File**

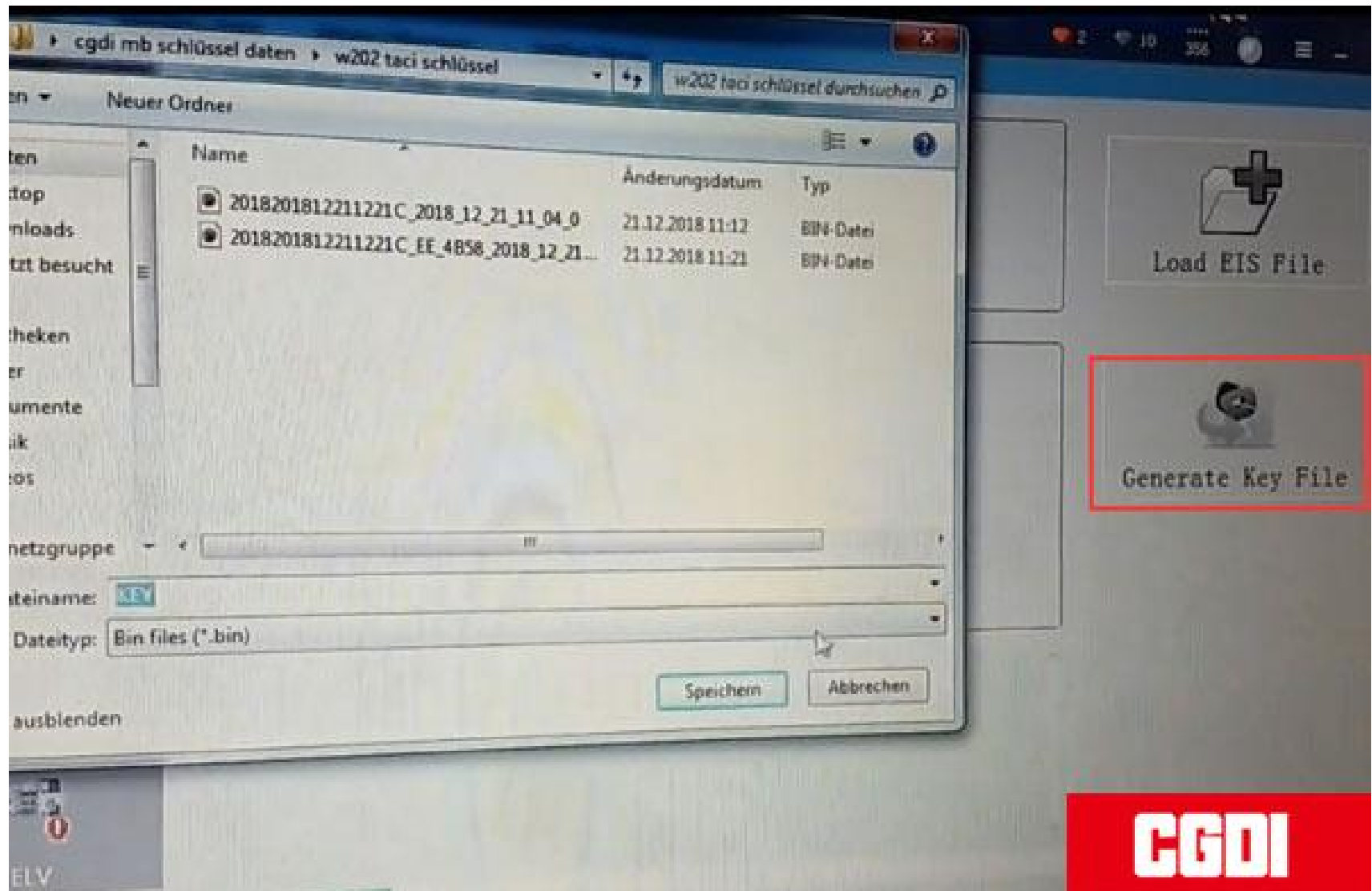
**Operation Tip**

1. Click the 'Load EIS File' button, check the SSID and password integrity  
2. Select the key location and key type, then click the 'Generate key file' button, waiting for the results generated

**CGDI**

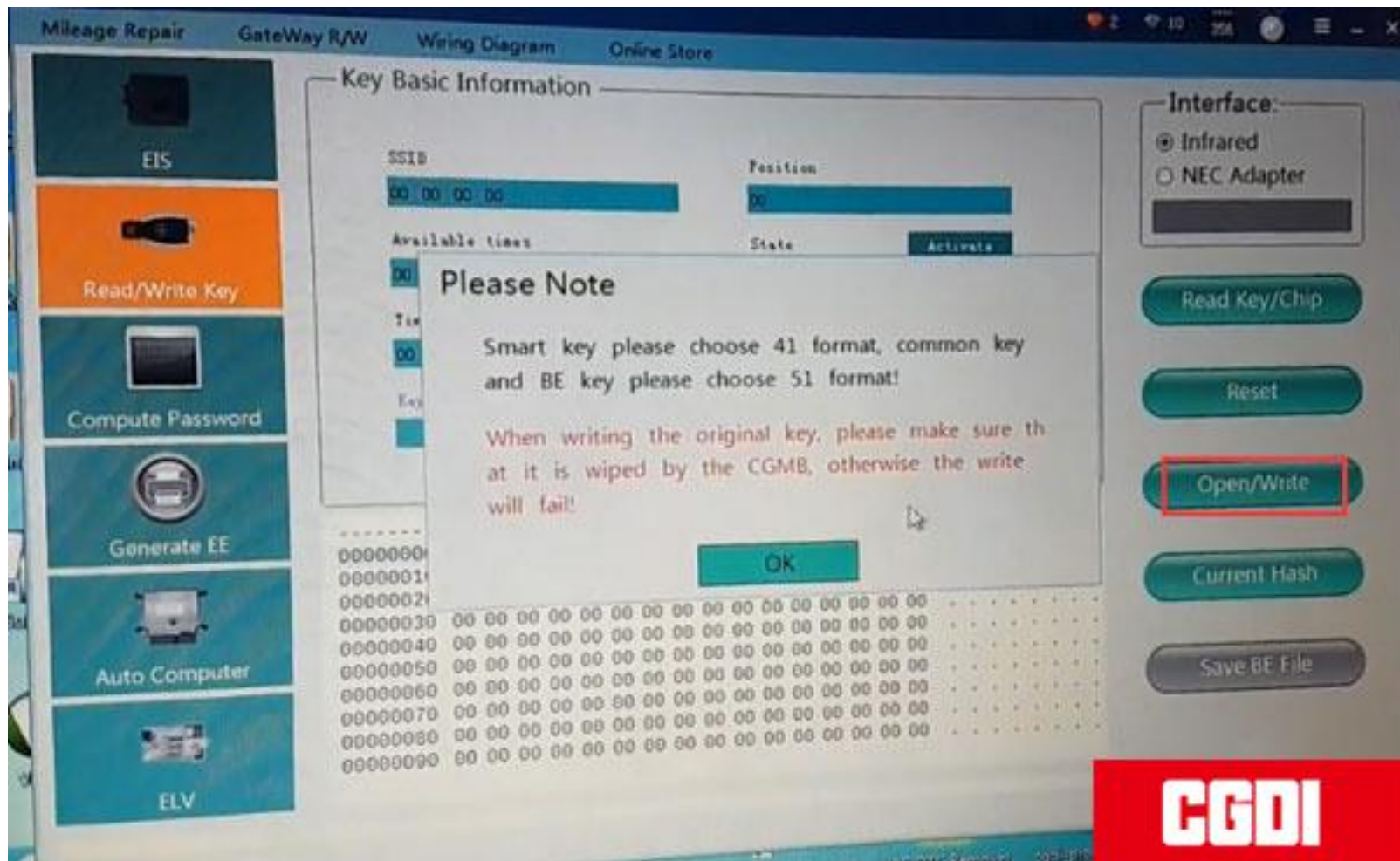


Upload EIS file just saved-->Press Generate Key File-->The key file was generated successfully



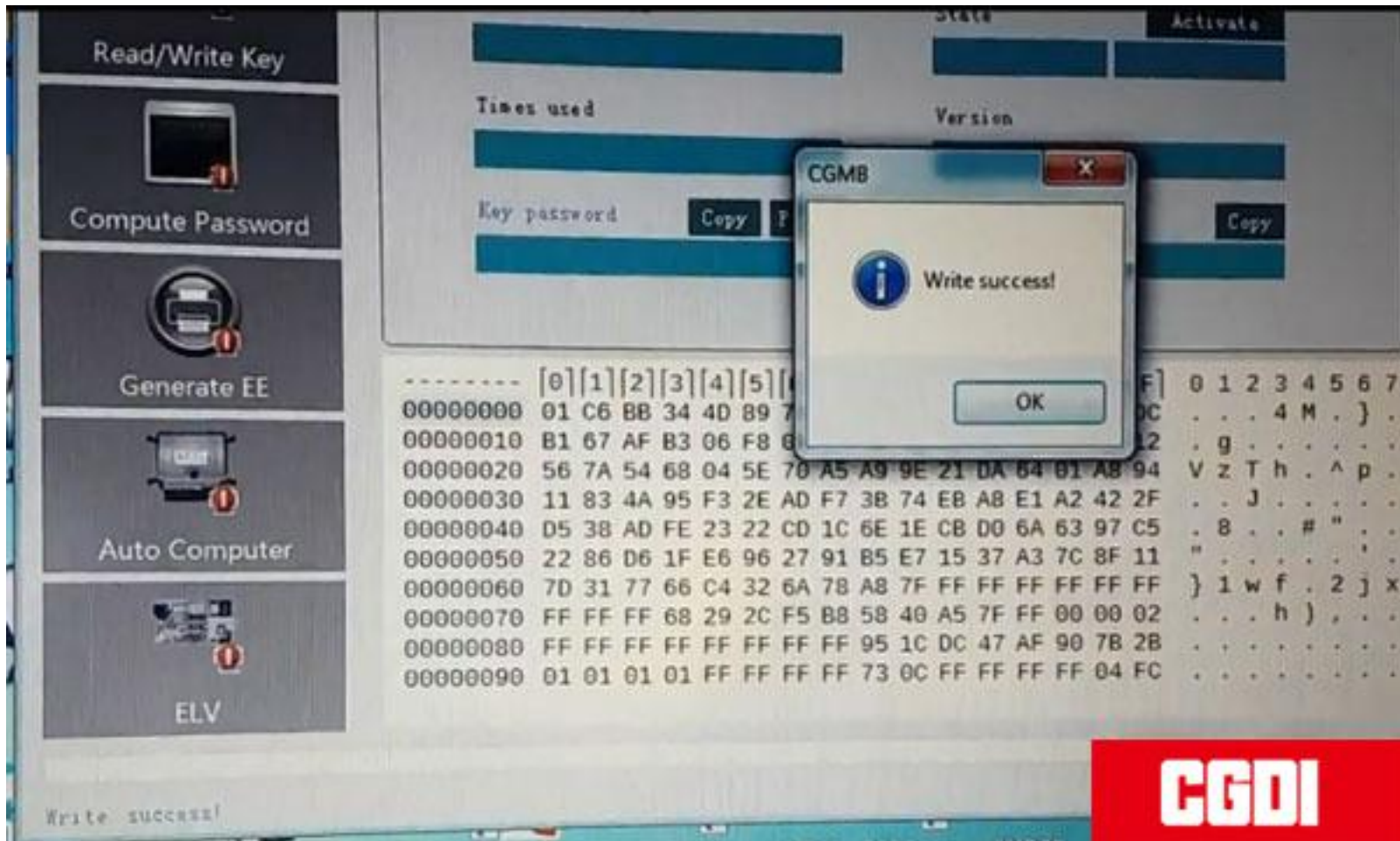


Then Open/Write



Smart key choose 41 format, common key and BE key cchoose 51 format.

Select a key file and write it.



Write key success.





Test the new key. Works good.

**Done!**